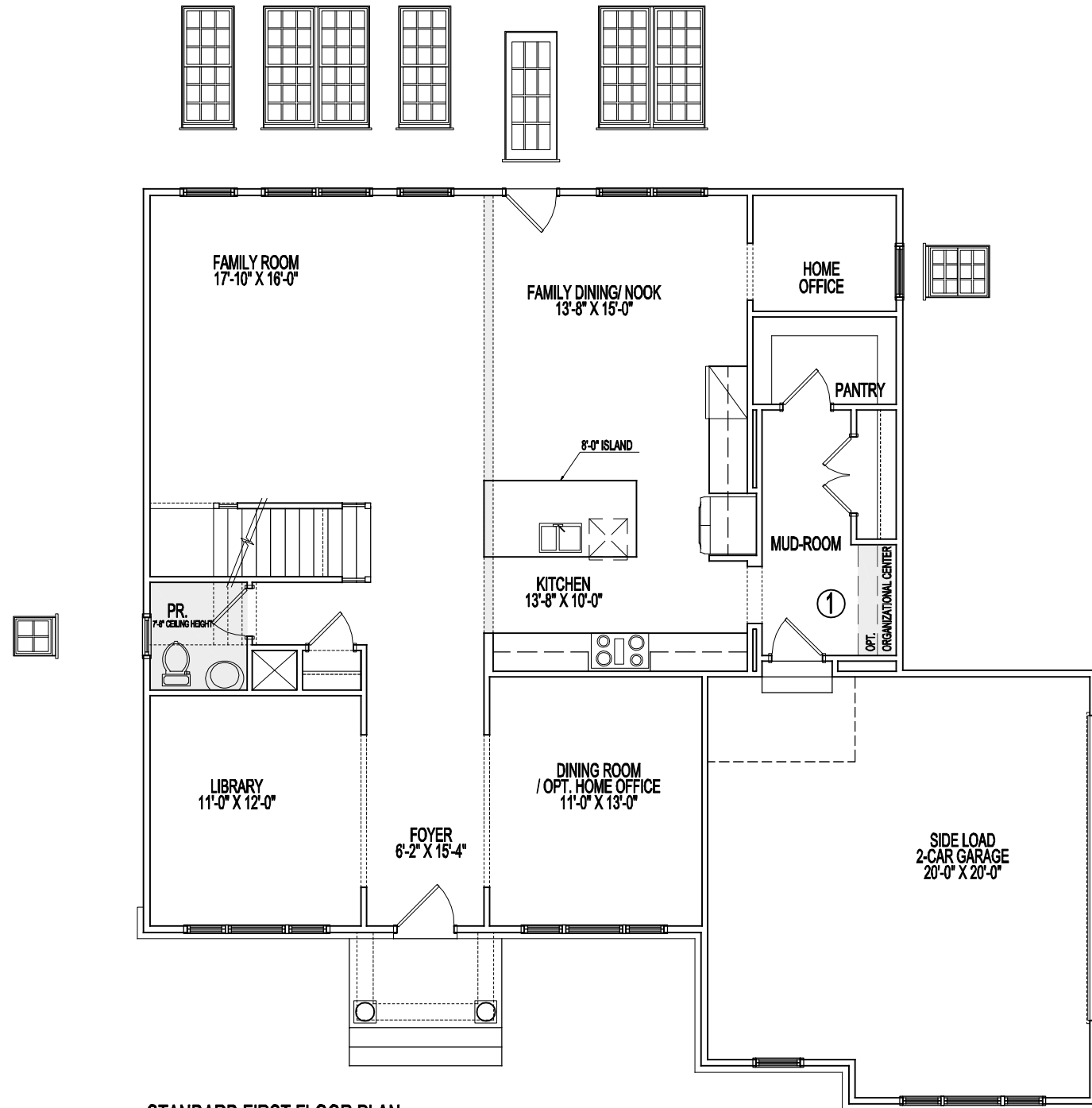


MULBERRY WAY

STANDARD PLAN AND STRUCTURAL OPTIONS



STANDARD FIRST FLOOR PLAN

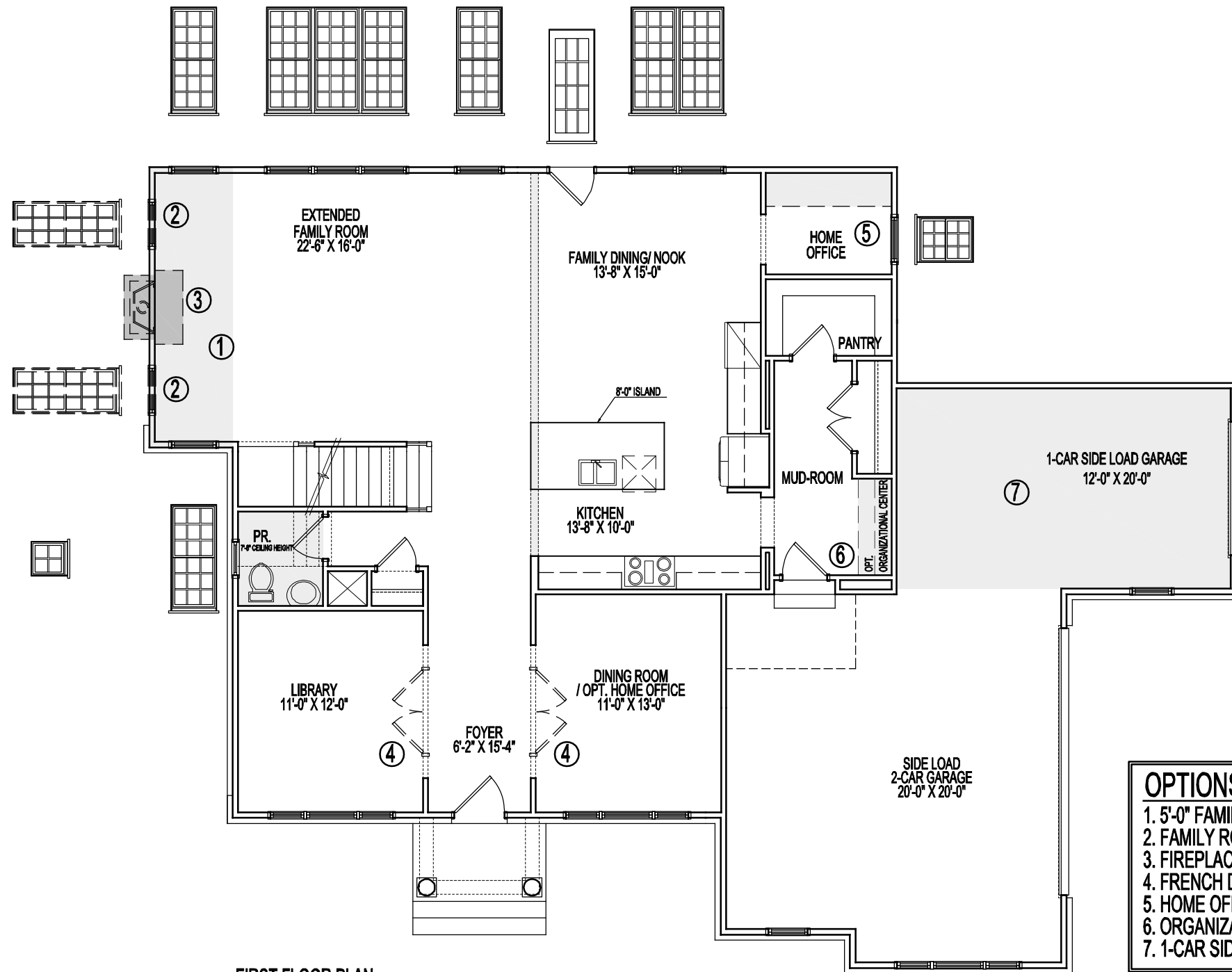
STANDARD 9'-0" CEILING

12-6-2024

OPTIONS
1. ORGANIZATIONAL CENTER

Room sizes for the Dining Room, Living Room, Library, Foyer, and Bedrooms at the front of the house may increase per Elevation. Alternate Elevations may include Bay or Box Bay Windows as well as building offsets.

See sales manager for floor plan and room size dimensions with Alternate Elevations.



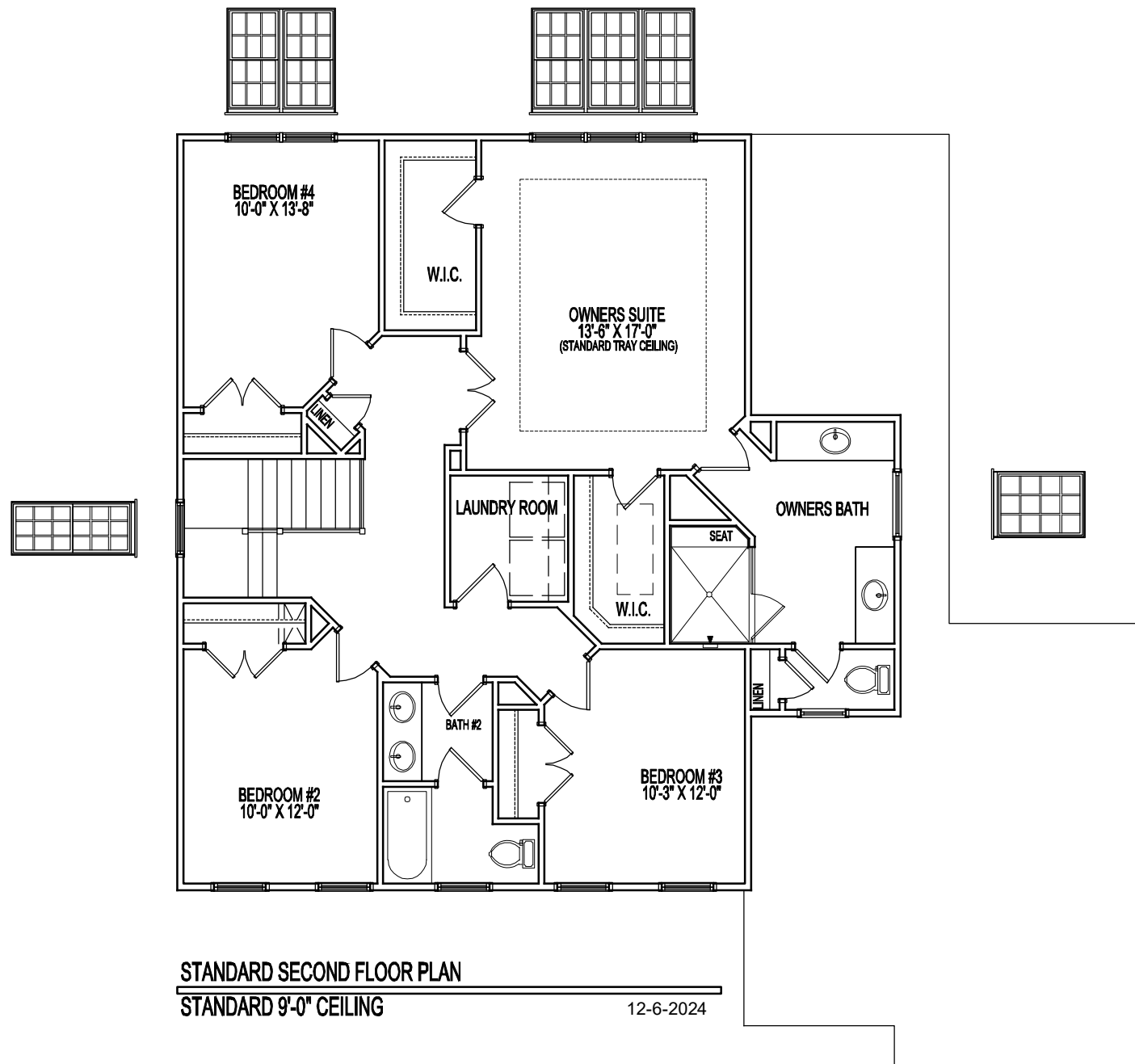
FIRST FLOOR PLAN

STANDARD 9'-0" CEILING

12-6-2024

- OPTIONS**
1. 5'-0" FAMILY ROOM EXTENSION
 2. FAMILY ROOM WINDOWS
 3. FIREPLACE
 4. FRENCH DOORS
 5. HOME OFFICE DESK
 6. ORGANIZATIONAL CENTER
 7. 1-CAR SIDE LOAD GARAGE

Room sizes for the Dining Room, Living Room, Library, Foyer, and Bedrooms at the front of the house may increase per Elevation. Alternate Elevations may include Bay or Box Bay Windows as well as building offsets.
See sales manager for floor plan and room size dimensions with Alternate Elevations.

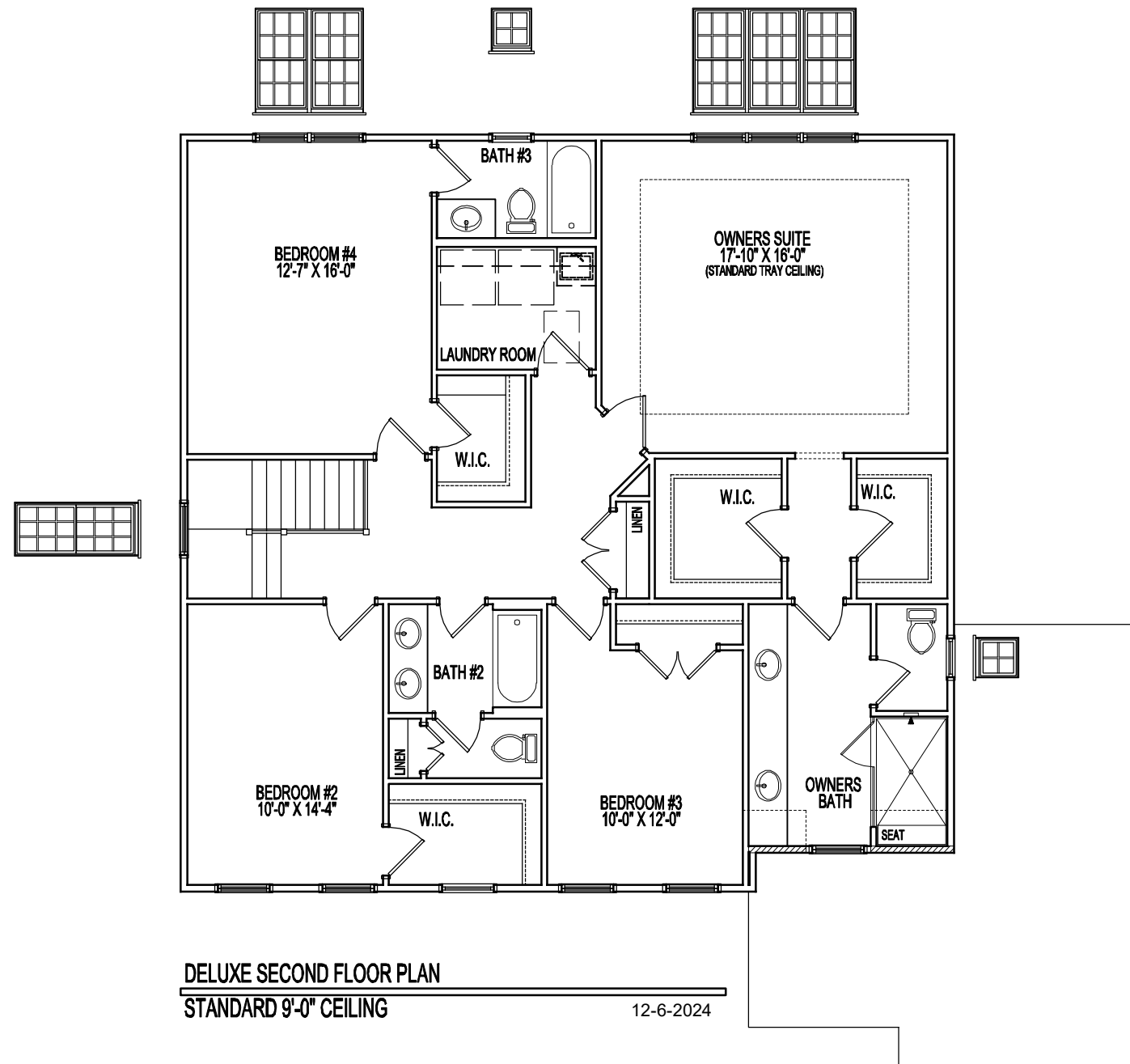


STANDARD SECOND FLOOR PLAN

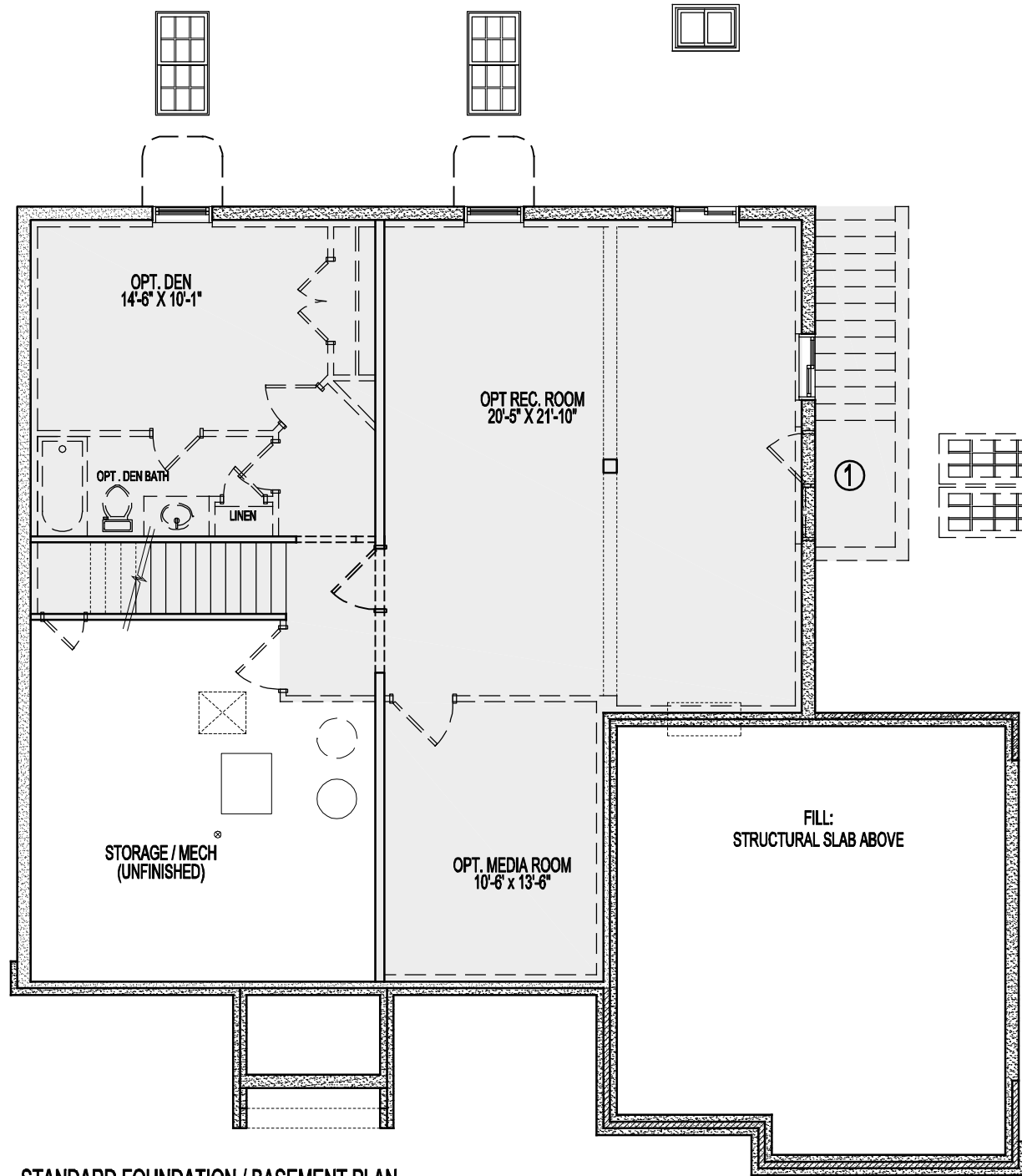
STANDARD 9'-0" CEILING

12-6-2024

Room sizes for the Dining Room, Living Room, Library, Foyer, and Bedrooms at the front of the house may increase per Elevation. Alternate Elevations may include Bay or Box Bay Windows as well as building offsets.
See sales manager for floor plan and room size dimensions with Alternate Elevations.

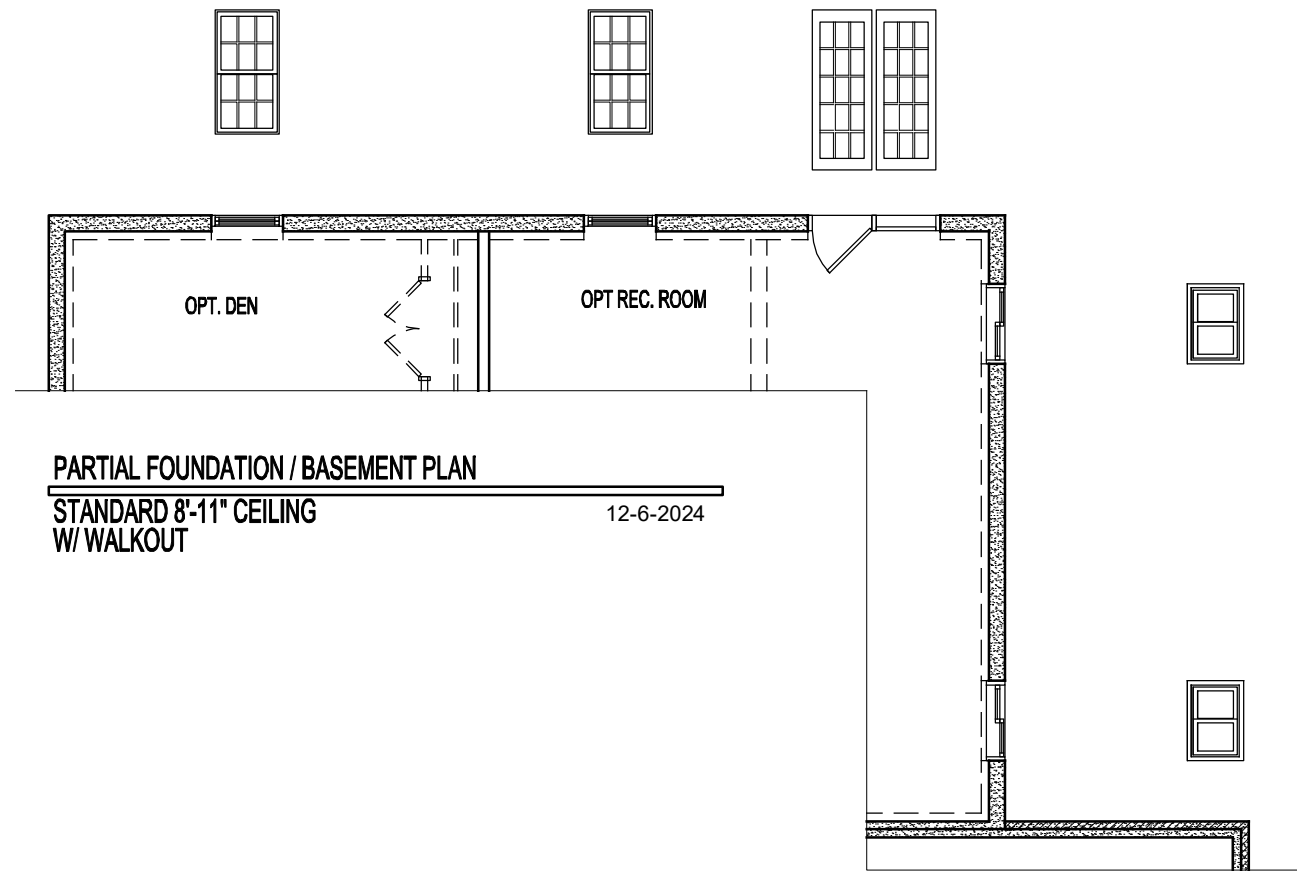


Room sizes for the Dining Room, Living Room, Library, Foyer, and Bedrooms at the front of the house may increase per Elevation. Alternate Elevations may include Bay or Box Bay Windows as well as building offsets.
 See sales manager for floor plan and room size dimensions with Alternate Elevations.



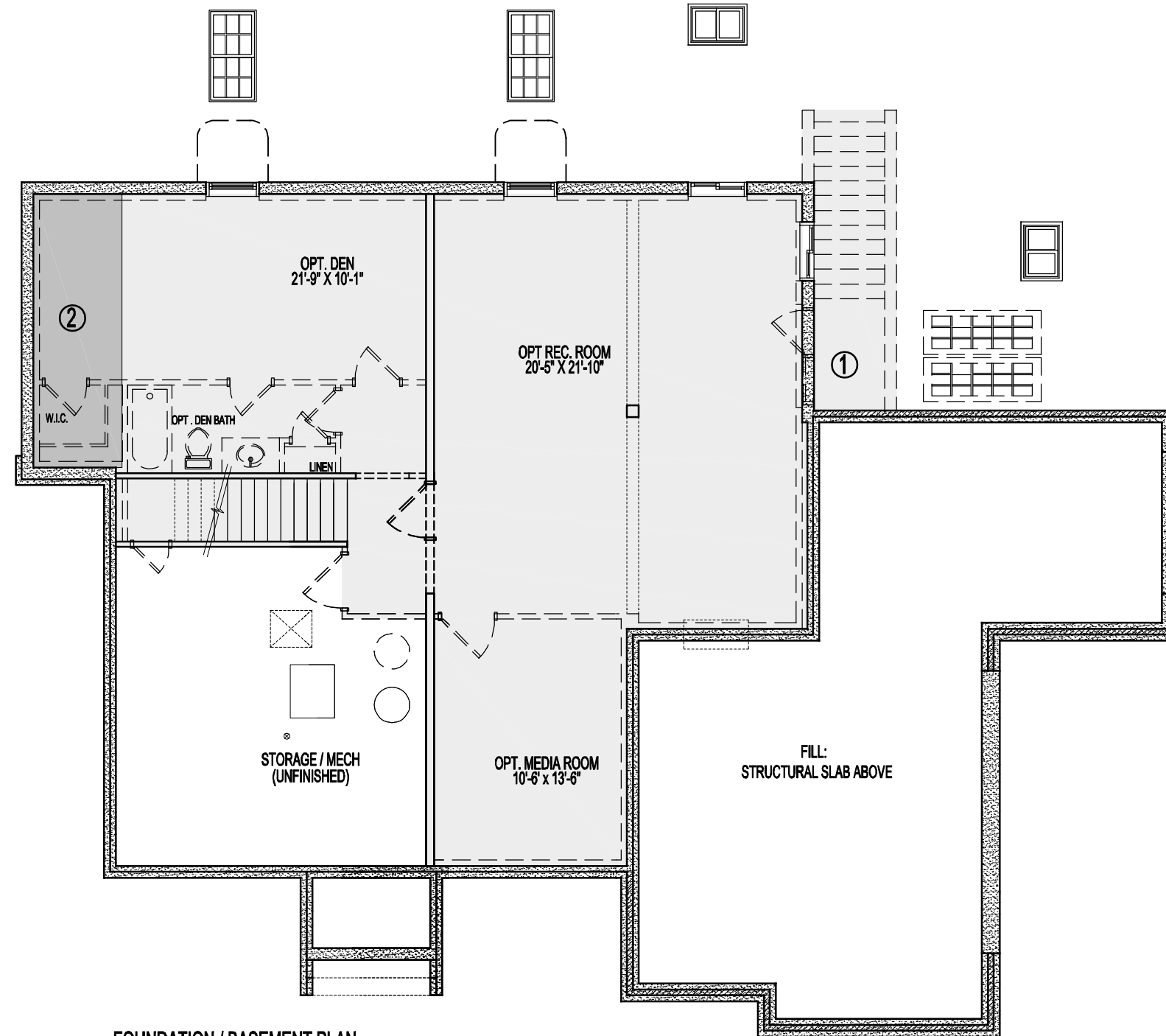
STANDARD FOUNDATION / BASEMENT PLAN
 STANDARD 8'-11" CEILING 12-6-2024

OPTIONS
 1. AREAWAY



PARTIAL FOUNDATION / BASEMENT PLAN
 STANDARD 8'-11" CEILING W/ WALKOUT 12-6-2024

Room sizes for the Dining Room, Living Room, Library, Foyer, and Bedrooms at the front of the house may increase per Elevation. Alternate Elevations may include Bay or Box Bay Windows as well as building offsets.
 See sales manager for floor plan and room size dimensions with Alternate Elevations.



FOUNDATION / BASEMENT PLAN

STANDARD 8'-11" CEILING

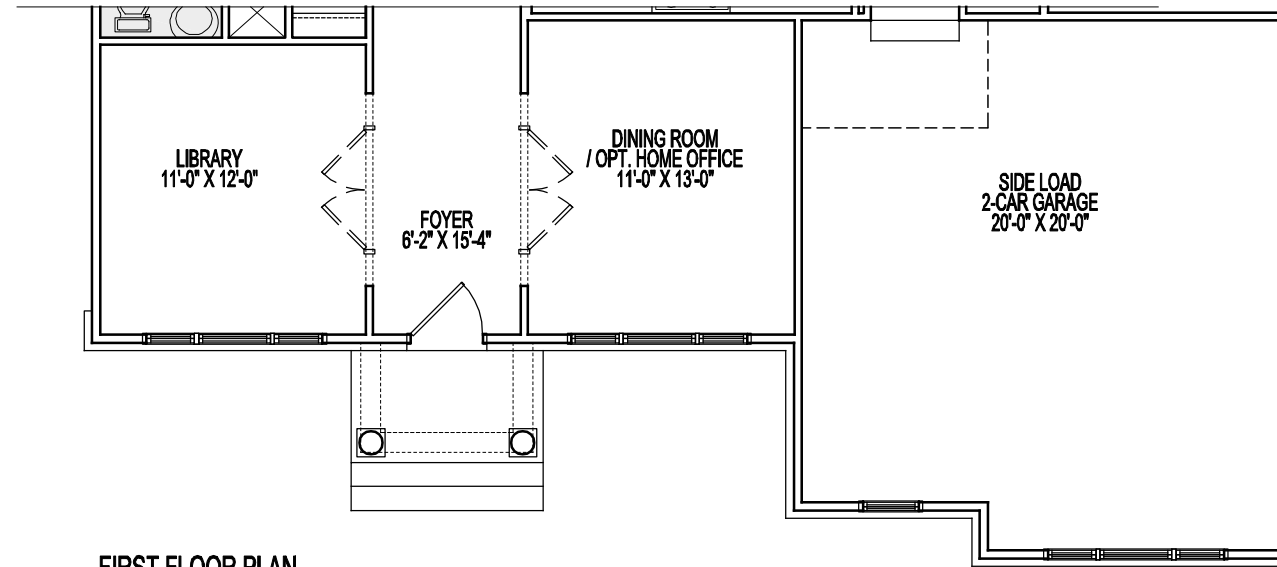
12-6-2024

- | |
|--|
| <p>OPTIONS</p> <p>1. AREAWAY</p> <p>2. EXTENDED DEN</p> |
|--|

Room sizes for the Dining Room, Living Room, Library, Foyer, and Bedrooms at the front of the house may increase per Elevation. Alternate Elevations may include Bay or Box Bay Windows as well as building offsets.

See sales manager for floor plan and room size dimensions with Alternate Elevations.

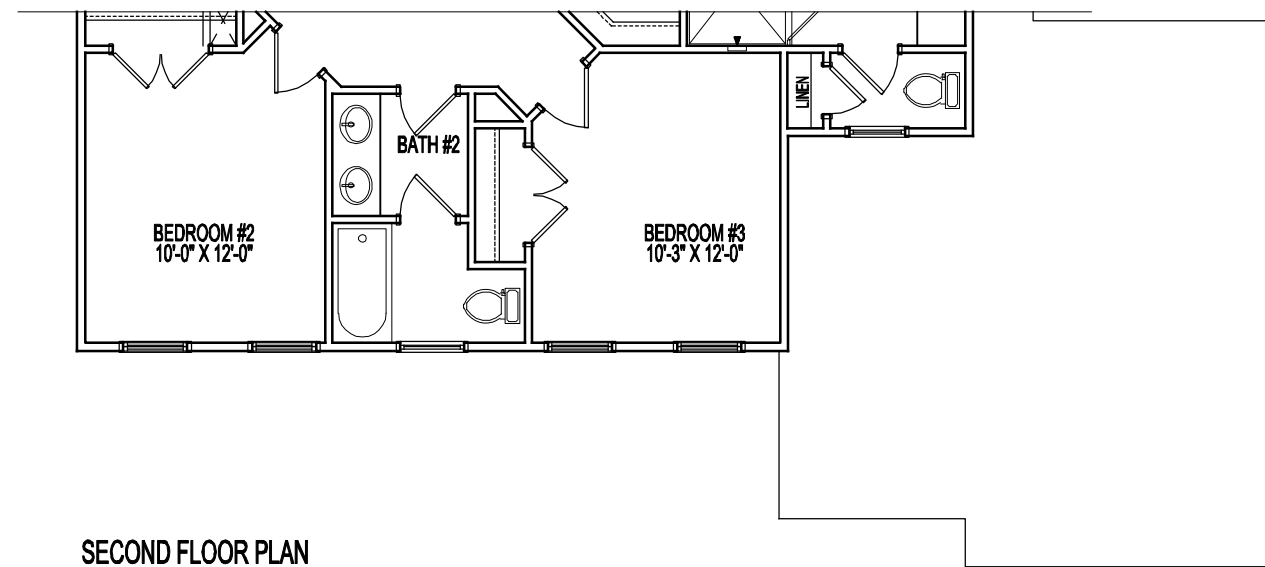
ALTERNATE ELEVATION PARTIAL PLANS



FIRST FLOOR PLAN

ELEVATION 2A
STANDARD 9'-0" CEILING

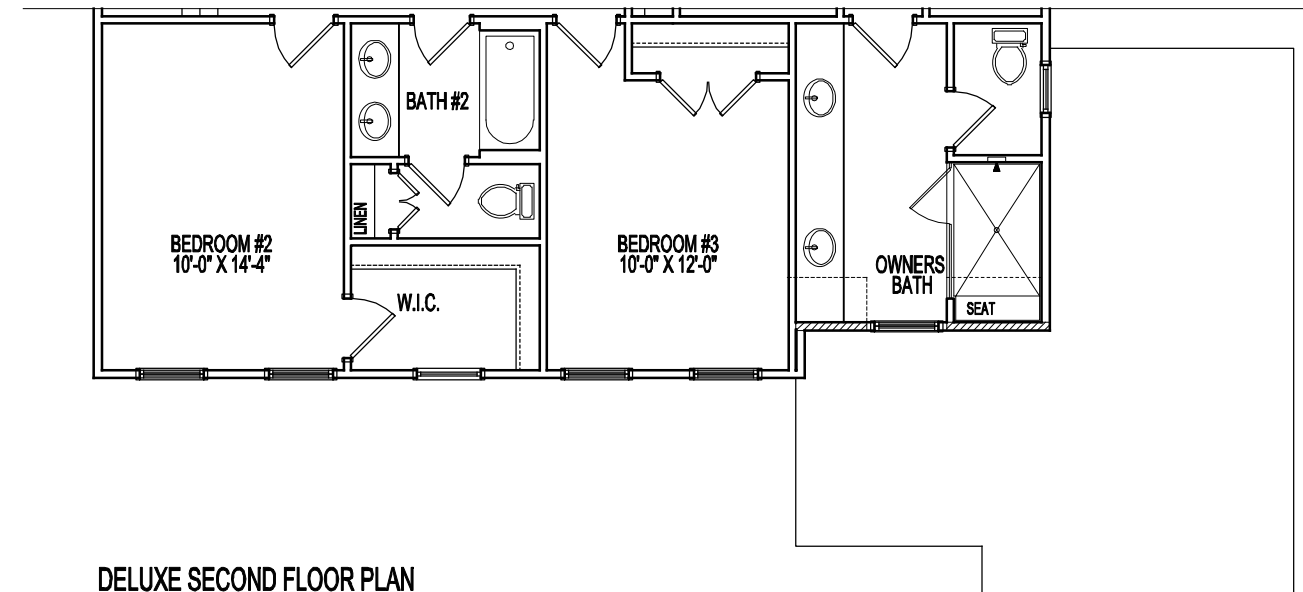
12-6-2024



SECOND FLOOR PLAN

ELEVATION 2A

12-6-2024



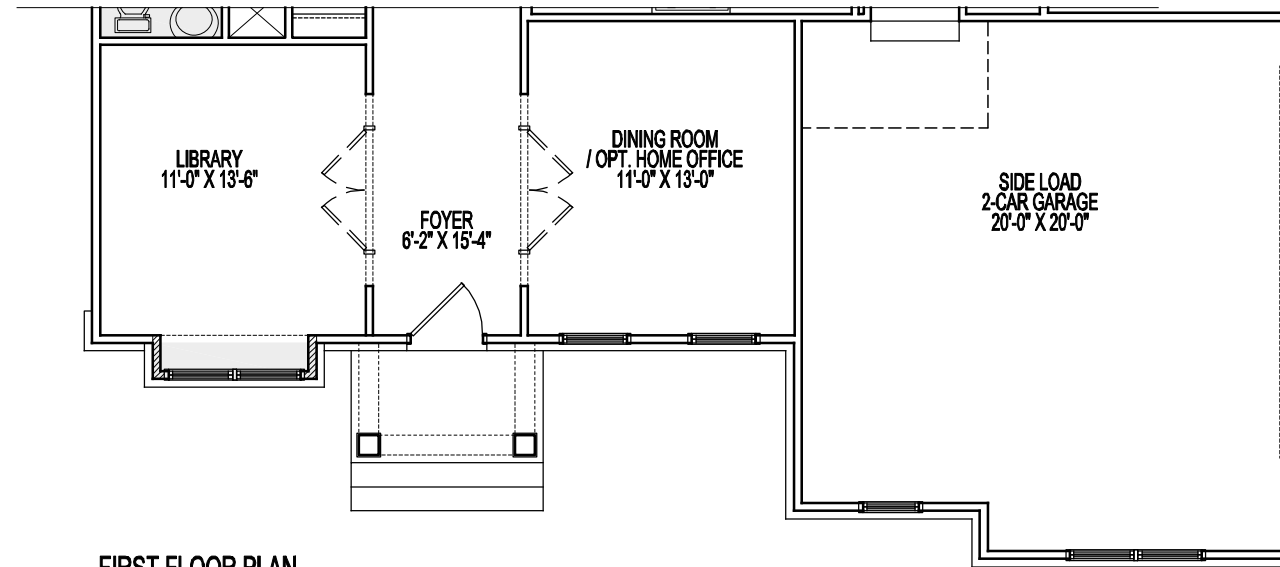
DELUXE SECOND FLOOR PLAN

ELEVATION 2A

12-6-2024

Room sizes for the Dining Room, Living Room, Library, Foyer, and Bedrooms at the front of the house may increase per Elevation. Alternate Elevations may include Bay or Box Bay Windows as well as building offsets.
See sales manager for floor plan and room size dimensions with Alternate Elevations.

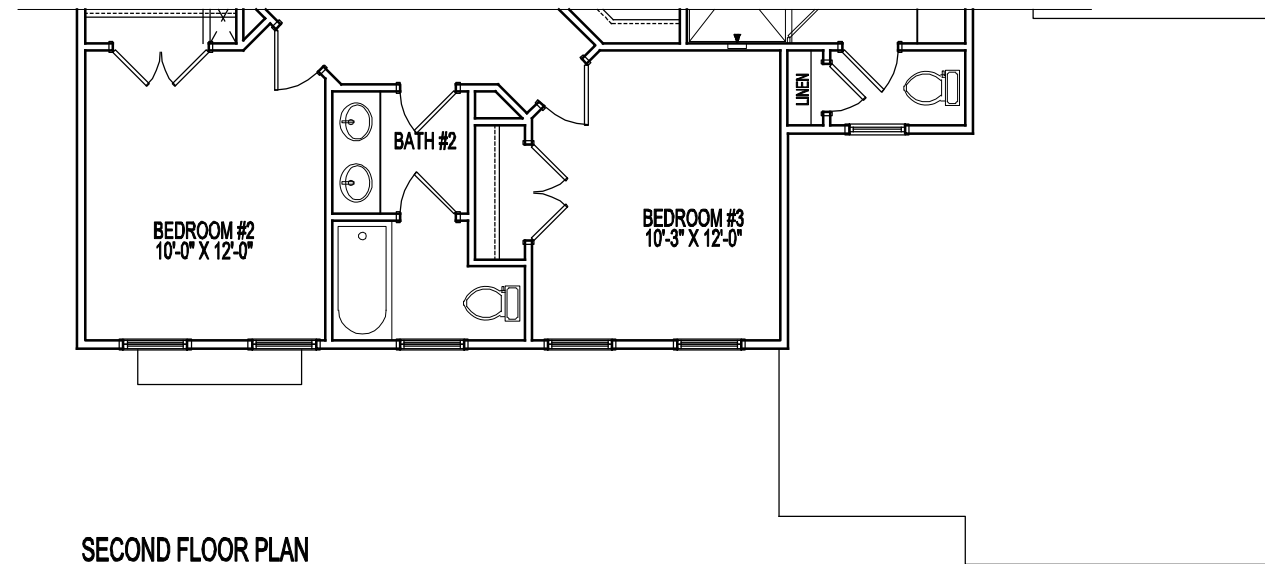
ALTERNATE ELEVATION PARTIAL PLANS



FIRST FLOOR PLAN

ELEVATION 3A
STANDARD 9'-0" CEILING

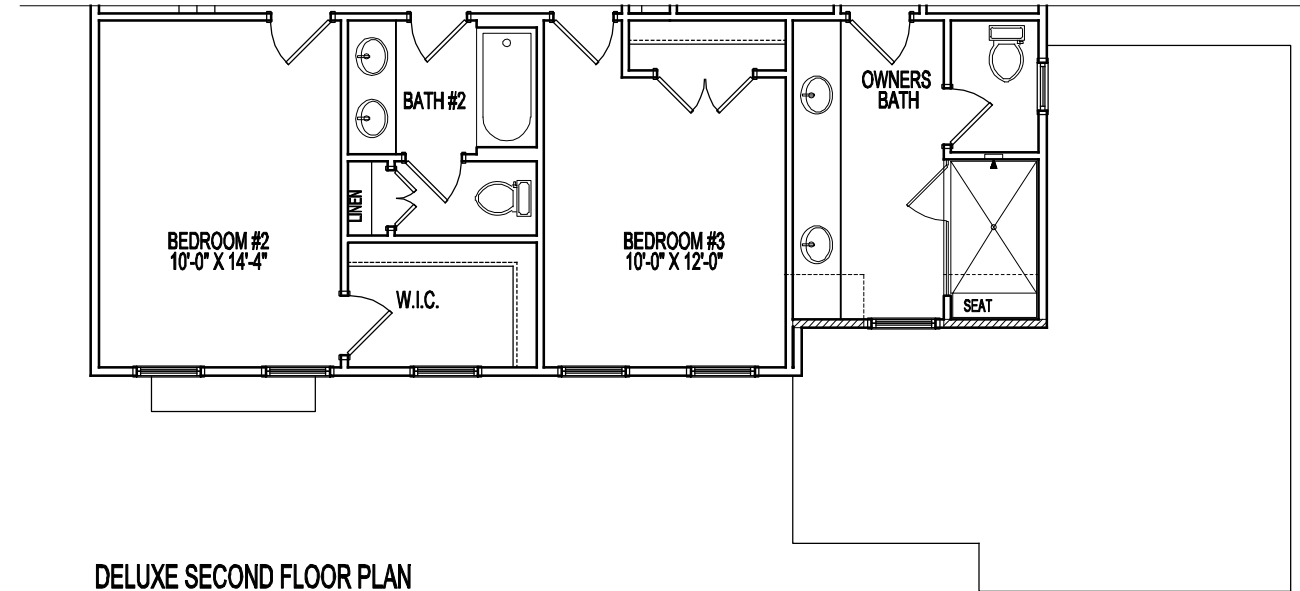
12-6-2024



SECOND FLOOR PLAN

ELEVATION 3A

12-6-2024



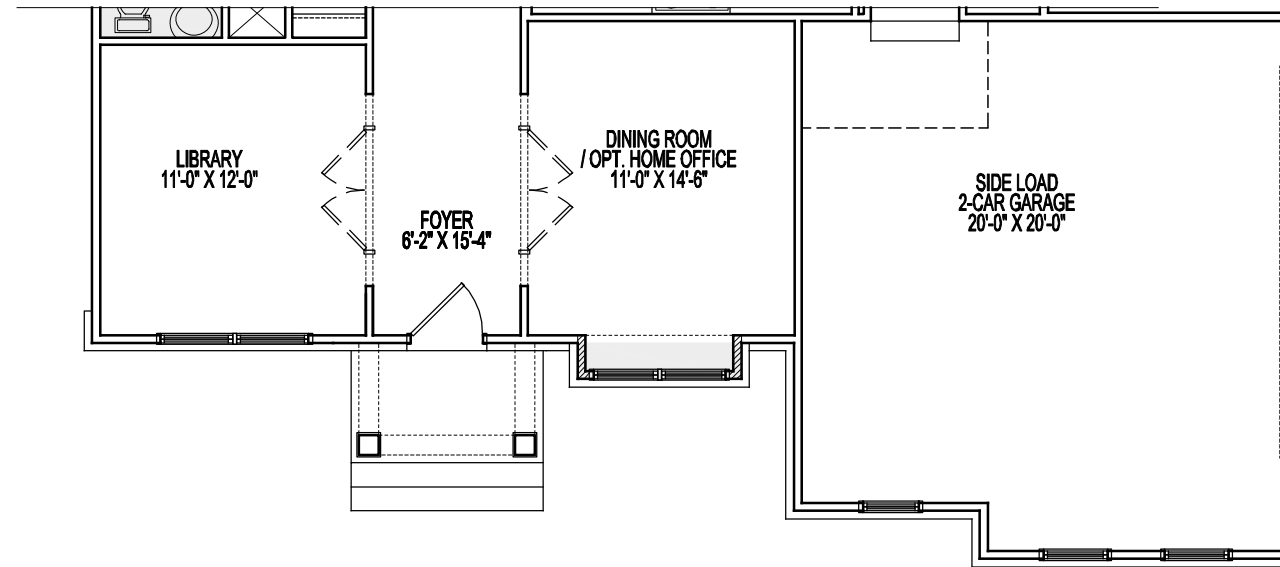
DELUXE SECOND FLOOR PLAN

ELEVATION 3A

12-6-2024

Room sizes for the Dining Room, Living Room, Library, Foyer, and Bedrooms at the front of the house may increase per Elevation. Alternate Elevations may include Bay or Box Bay Windows as well as building offsets.
See sales manager for floor plan and room size dimensions with Alternate Elevations.

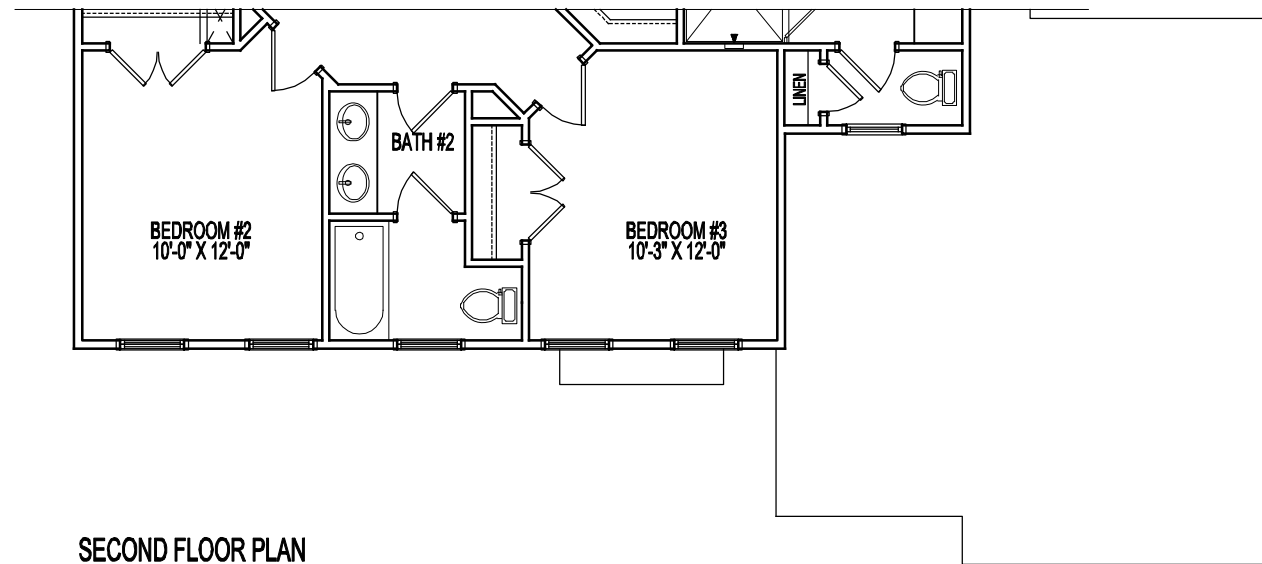
ALTERNATE ELEVATION PARTIAL PLANS



FIRST FLOOR PLAN

ELEVATION 4A
STANDARD 9'-0" CEILING

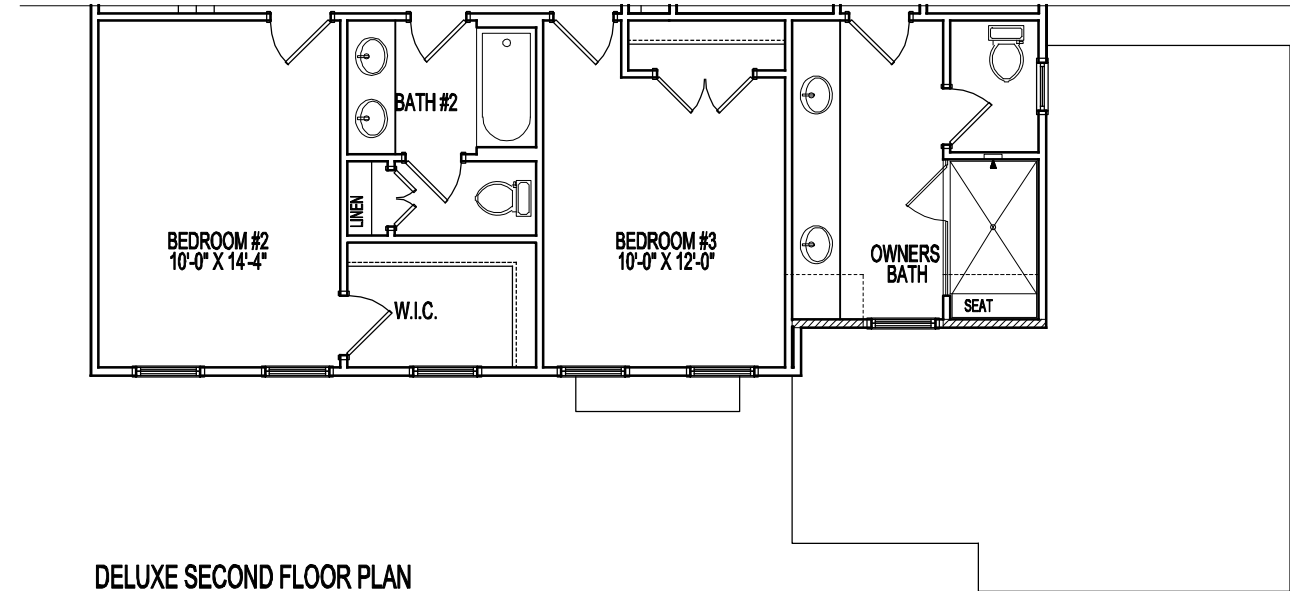
12-6-2024



SECOND FLOOR PLAN

ELEVATION 4A

12-6-2024



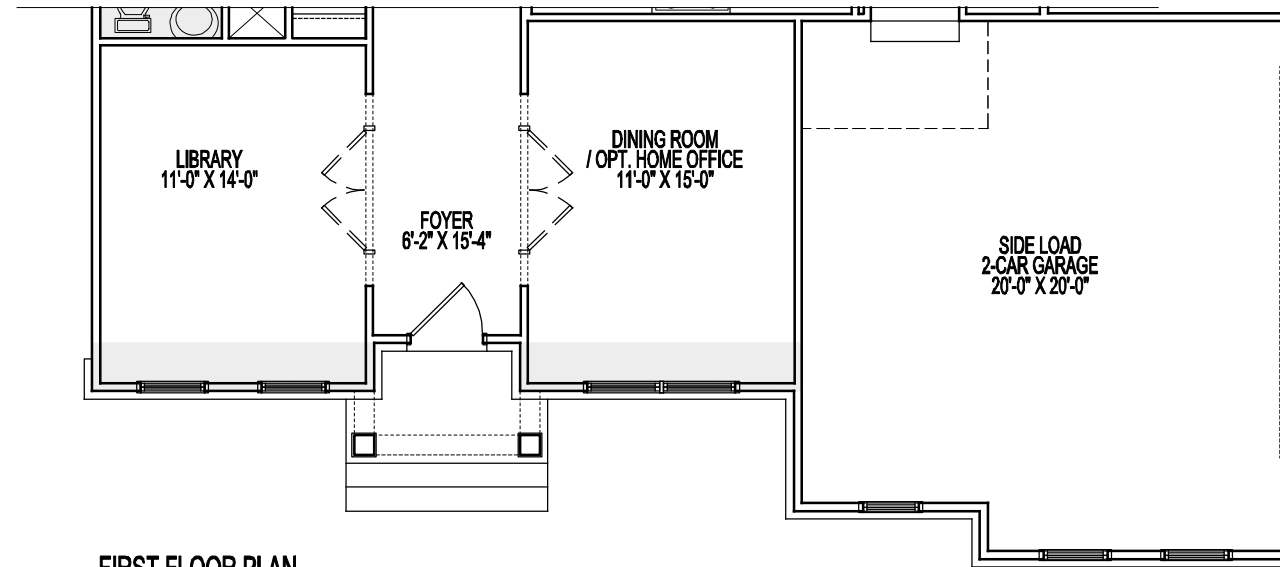
DELUXE SECOND FLOOR PLAN

ELEVATION 4A

12-6-2024

Room sizes for the Dining Room, Living Room, Library, Foyer, and Bedrooms at the front of the house may increase per Elevation. Alternate Elevations may include Bay or Box Bay Windows as well as building offsets.
See sales manager for floor plan and room size dimensions with Alternate Elevations.

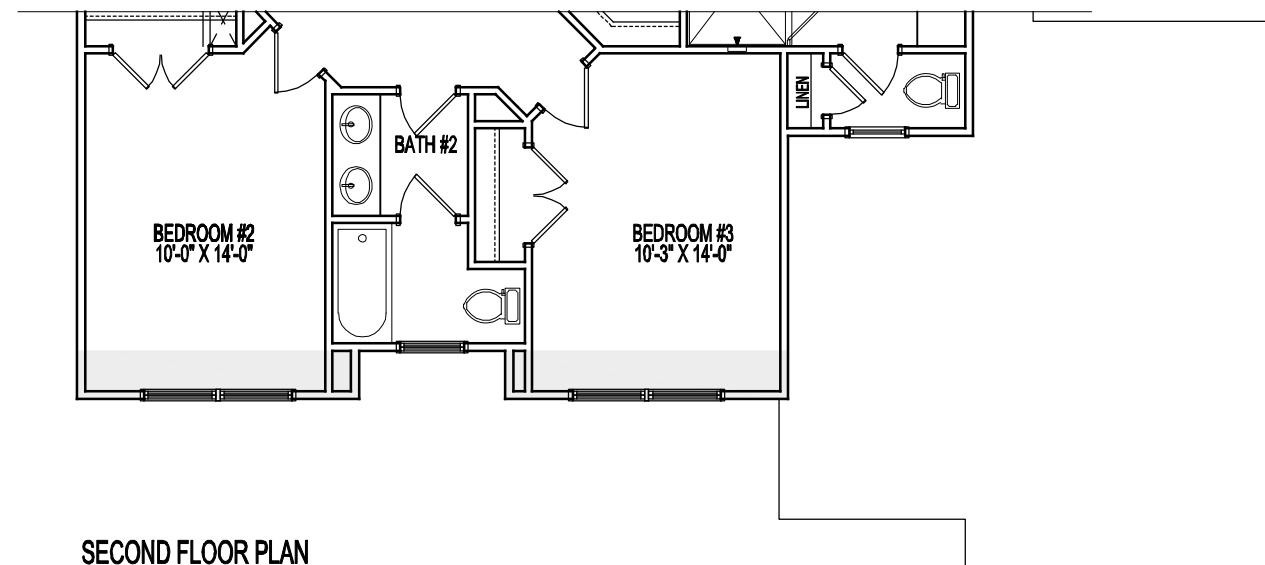
ALTERNATE ELEVATION PARTIAL PLANS



FIRST FLOOR PLAN

ELEVATION 5A
STANDARD 9'-0" CEILING

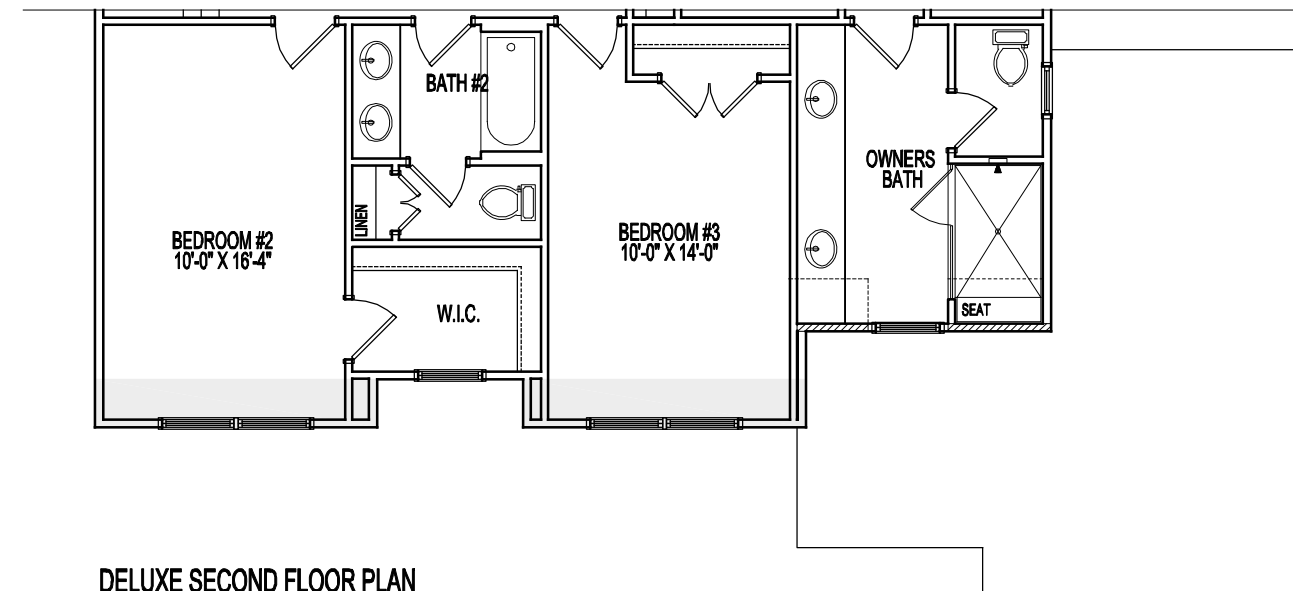
12-6-2024



SECOND FLOOR PLAN

ELEVATION 5A

12-6-2024



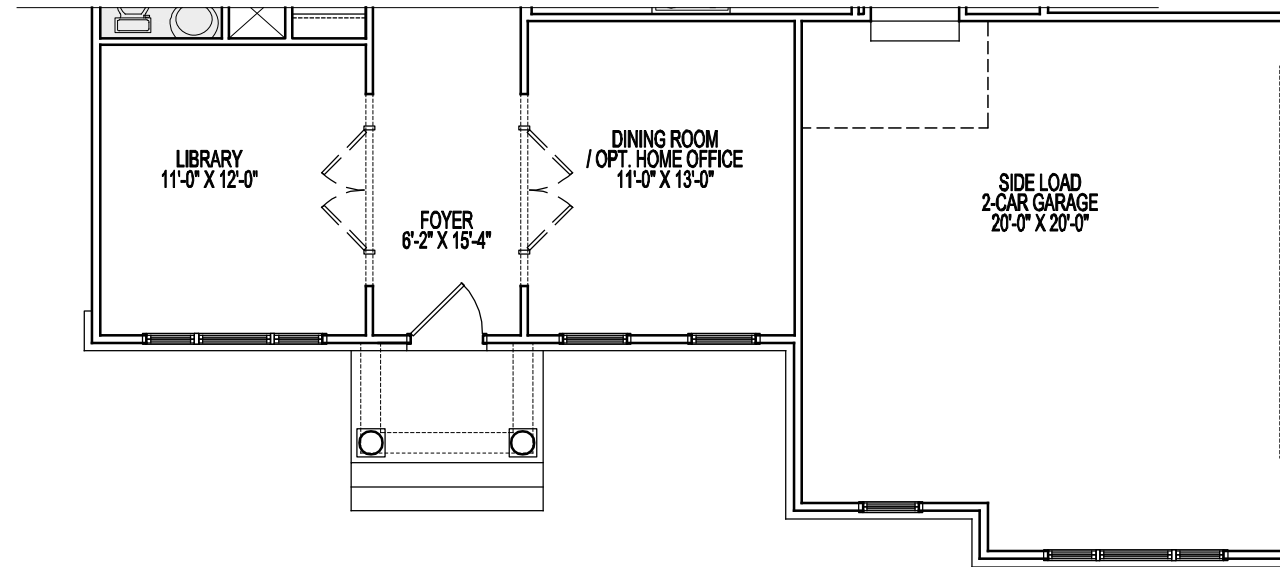
DELUXE SECOND FLOOR PLAN

ELEVATION 5A

12-6-2024

Room sizes for the Dining Room, Living Room, Library, Foyer, and Bedrooms at the front of the house may increase per Elevation. Alternate Elevations may include Bay or Box Bay Windows as well as building offsets. See sales manager for floor plan and room size dimensions with Alternate Elevations.

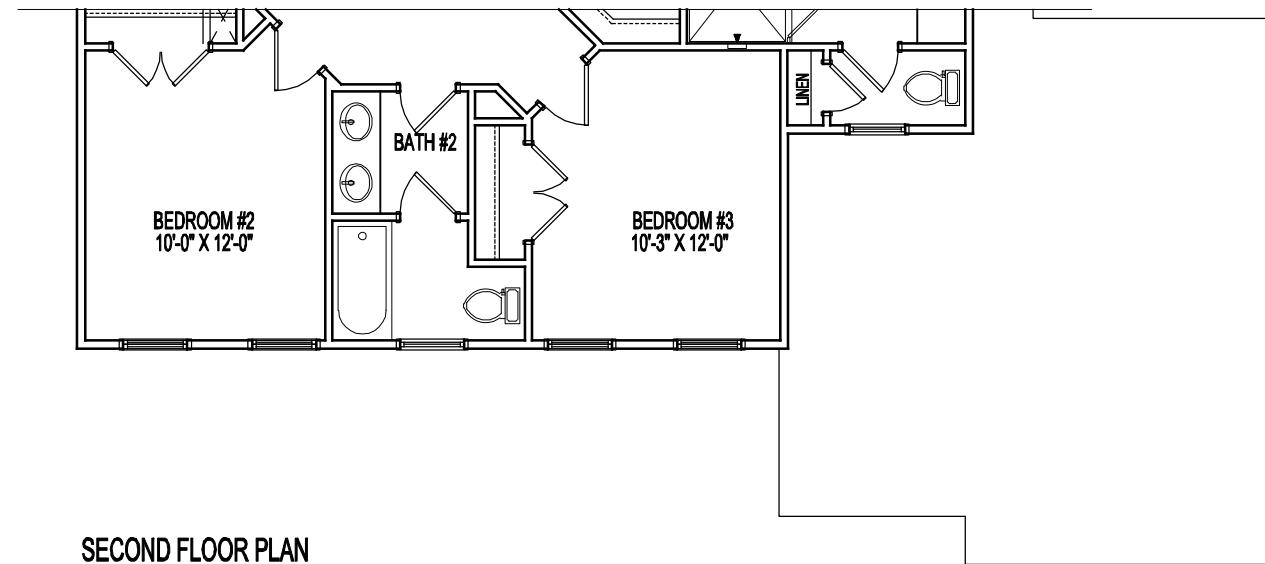
ALTERNATE ELEVATION PARTIAL PLANS



FIRST FLOOR PLAN

ELEVATION 6A
STANDARD 9'-0" CEILING

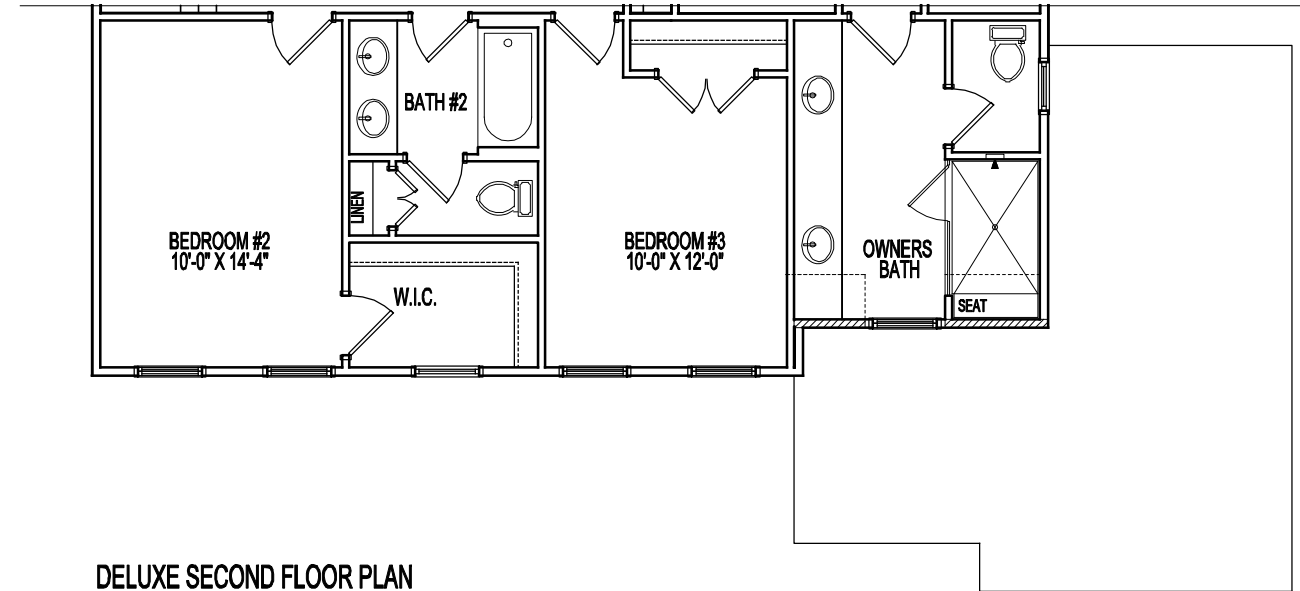
12-6-2024



SECOND FLOOR PLAN

W/ ELEVATION 6A

12-6-2024



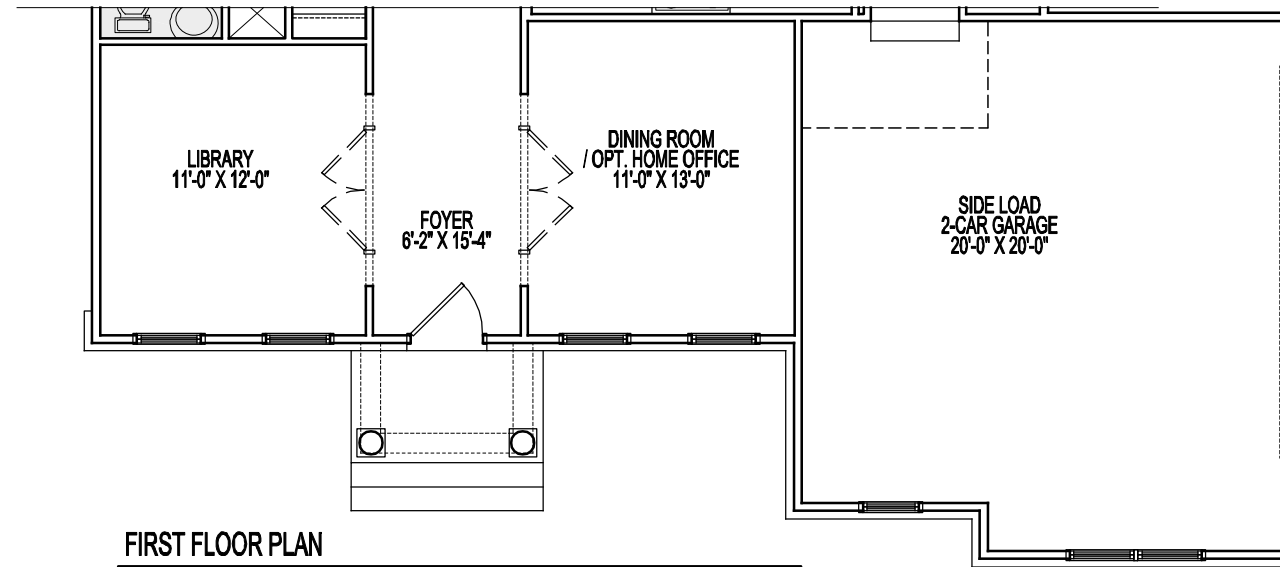
DELUXE SECOND FLOOR PLAN

W/ ELEVATION 6A

12-6-2024

Room sizes for the Dining Room, Living Room, Library, Foyer, and Bedrooms at the front of the house may increase per Elevation. Alternate Elevations may include Bay or Box Bay Windows as well as building offsets.
See sales manager for floor plan and room size dimensions with Alternate Elevations.

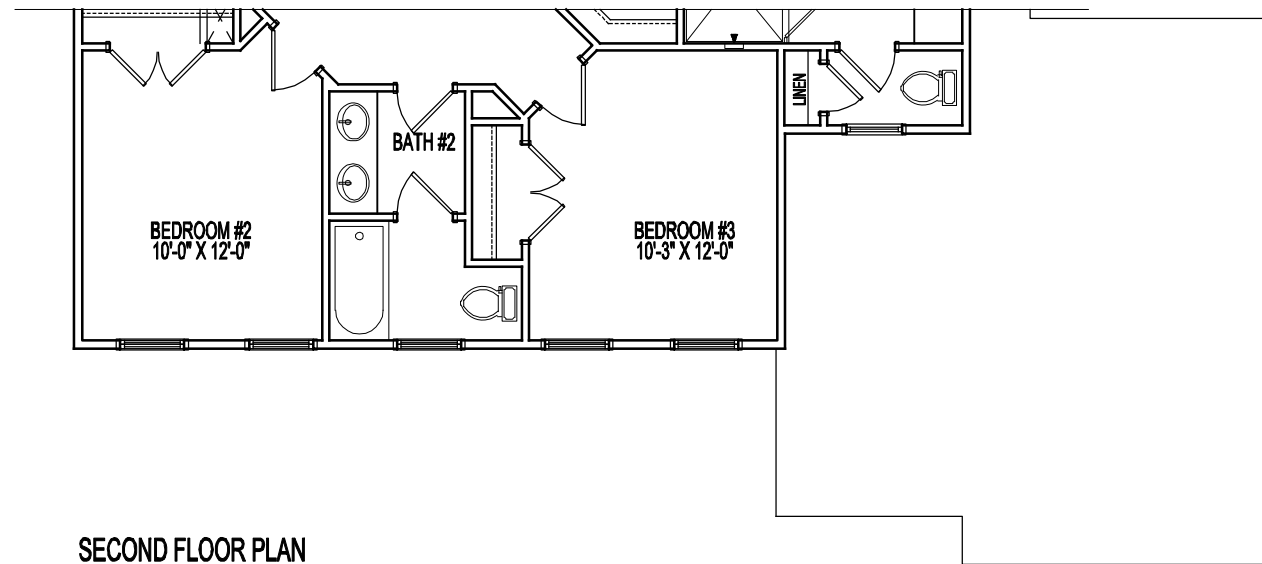
ALTERNATE ELEVATION PARTIAL PLANS



FIRST FLOOR PLAN

ELEVATION 7A
STANDARD 9'-0" CEILING

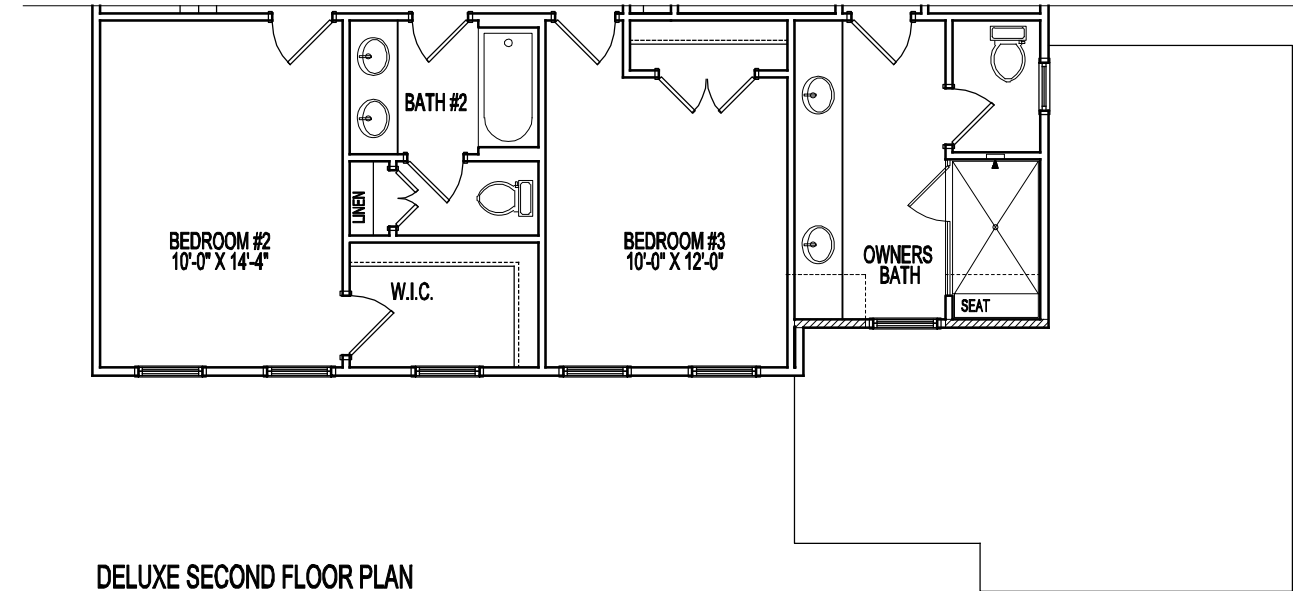
12-6-2024



SECOND FLOOR PLAN

ELEVATION 7A

12-6-2024



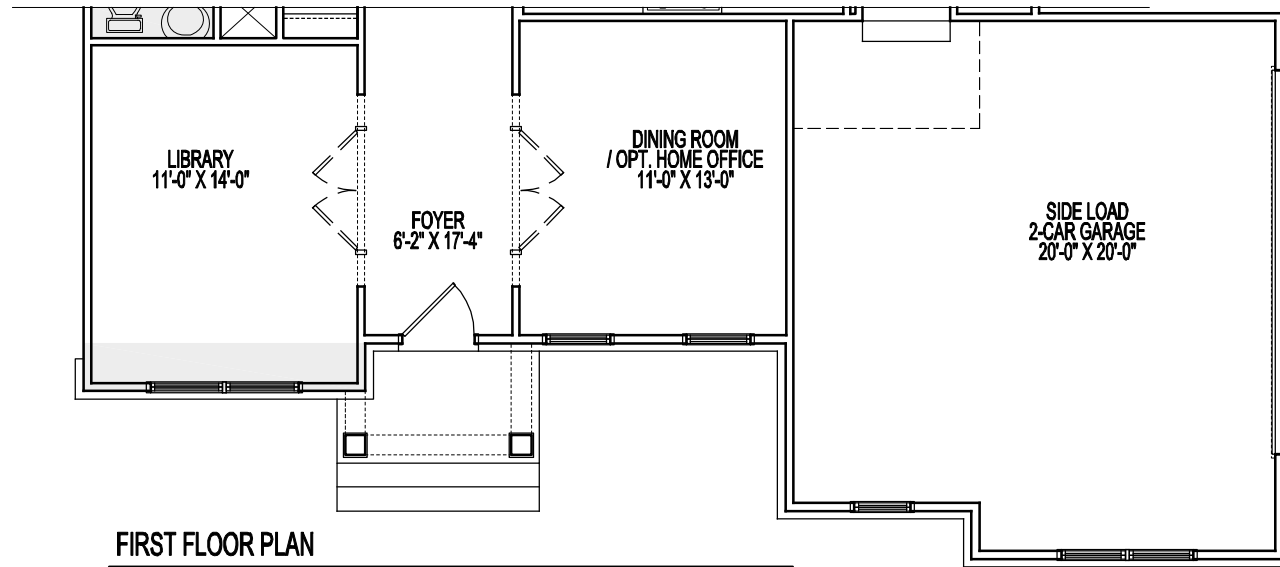
DELUXE SECOND FLOOR PLAN

ELEVATION 7A

12-6-2024

Room sizes for the Dining Room, Living Room, Library, Foyer, and Bedrooms at the front of the house may increase per Elevation. Alternate Elevations may include Bay or Box Bay Windows as well as building offsets.
See sales manager for floor plan and room size dimensions with Alternate Elevations.

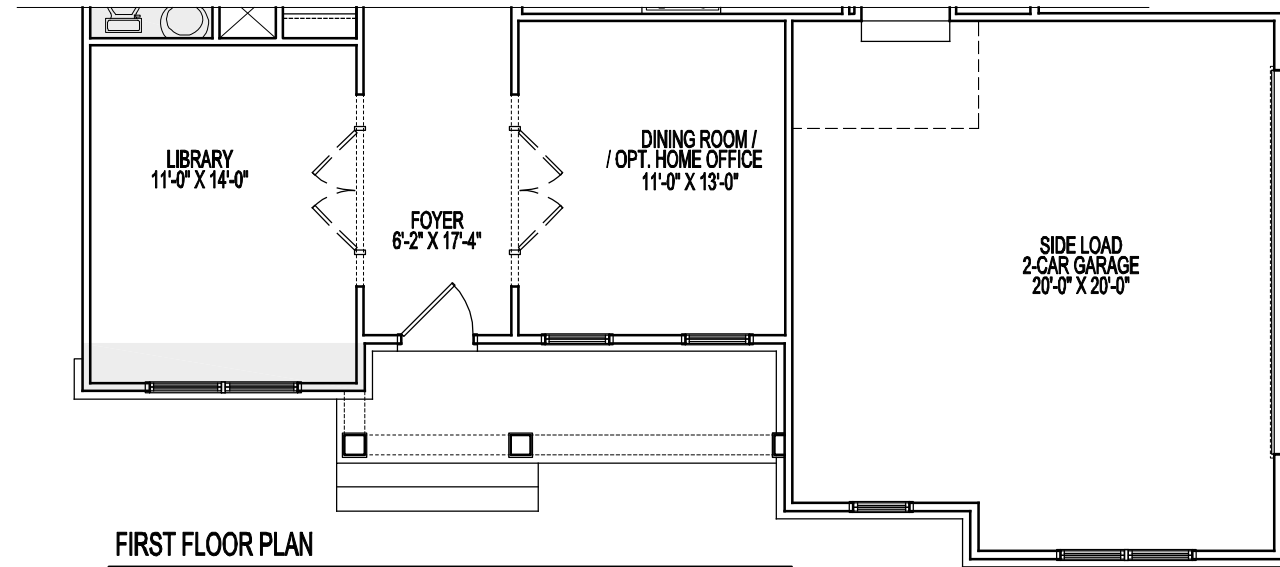
ALTERNATE ELEVATION PARTIAL PLANS



FIRST FLOOR PLAN

ELEVATION 8A
STANDARD 9'-0" CEILING

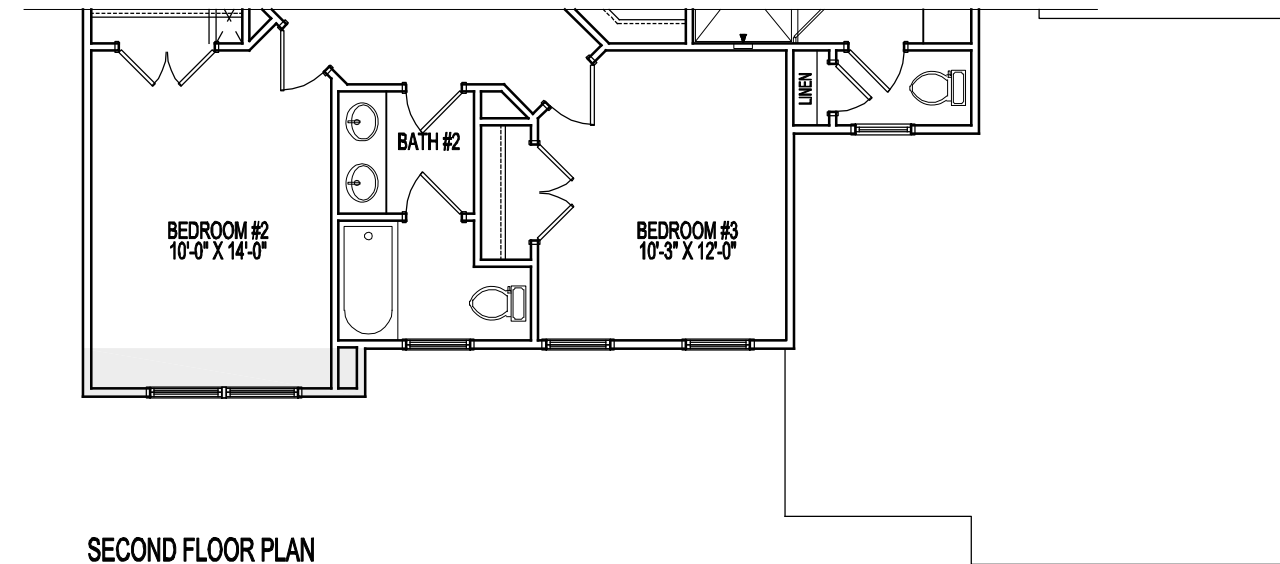
12-6-2024



FIRST FLOOR PLAN

ELEVATION 8B
STANDARD 9'-0" CEILING

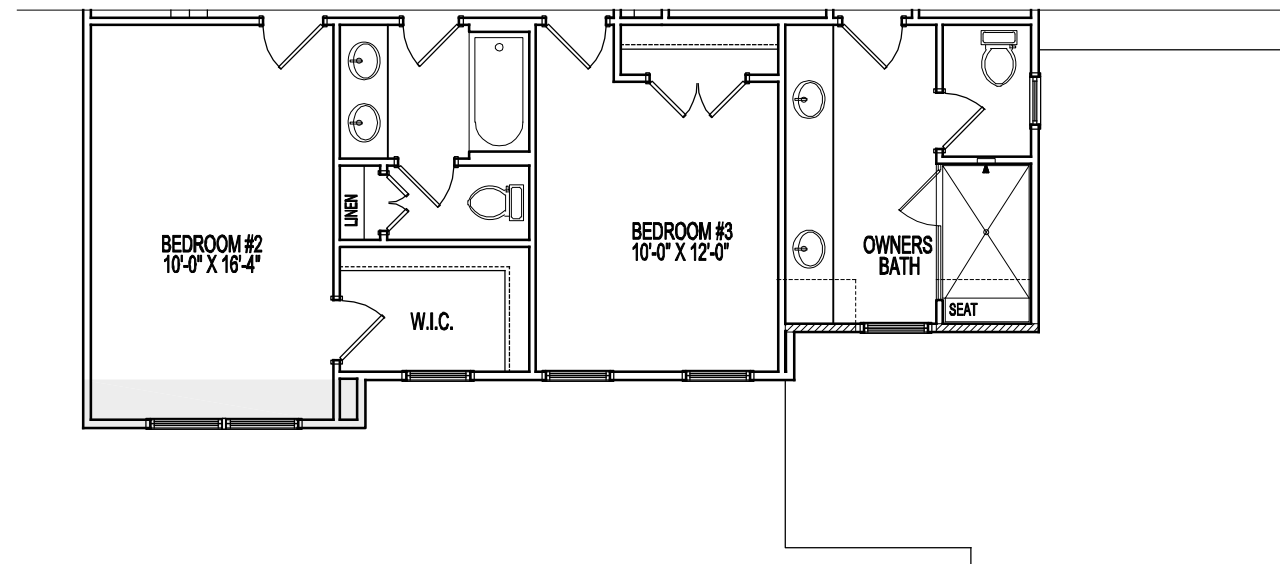
12-6-2024



SECOND FLOOR PLAN

ELEVATION 8A/B

12-6-2024



DELUXE SECOND FLOOR PLAN

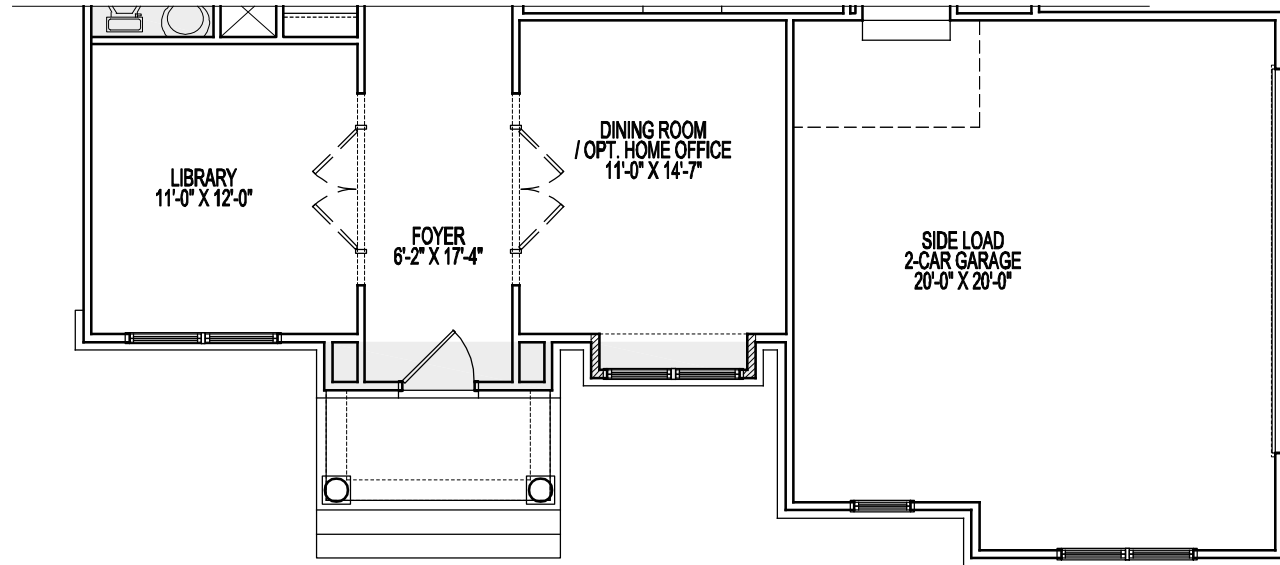
ELEVATION 8A/B

12-6-2024

Room sizes for the Dining Room, Living Room, Library, Foyer, and Bedrooms at the front of the house may increase per Elevation. Alternate Elevations may include Bay or Box Bay Windows as well as building offsets.

See sales manager for floor plan and room size dimensions with Alternate Elevations.

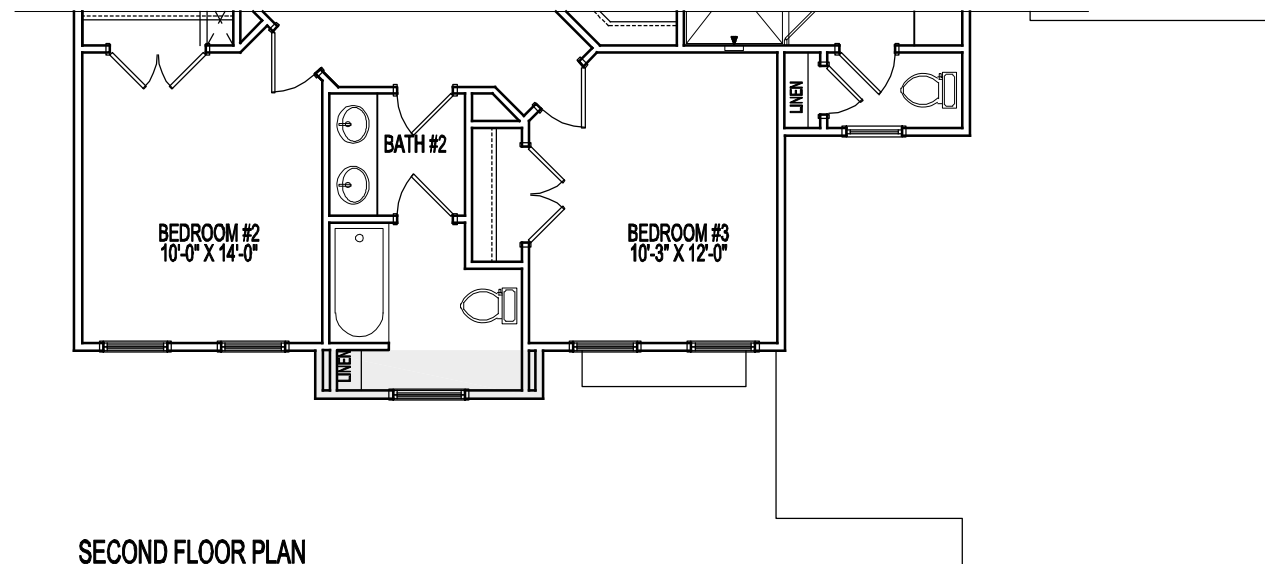
ALTERNATE ELEVATION PARTIAL PLANS



FIRST FLOOR PLAN

ELEVATION 9A
STANDARD 9'-0" CEILING

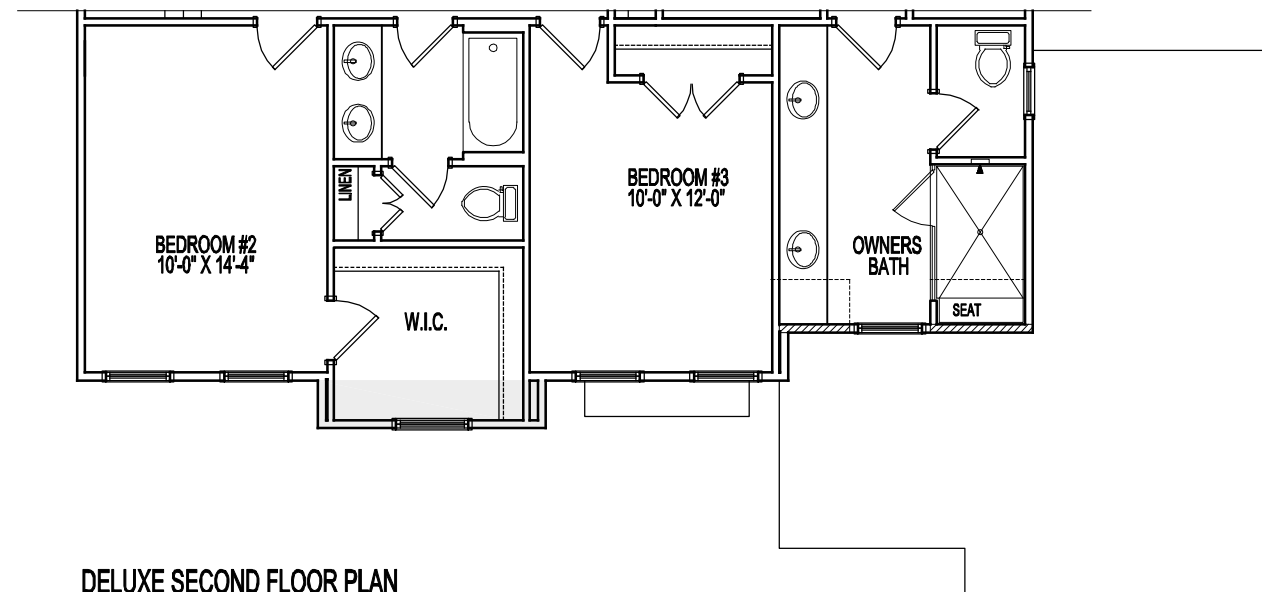
12-6-2024



SECOND FLOOR PLAN

ELEVATION 9A

12-6-2024



DELUXE SECOND FLOOR PLAN

ELEVATION 9A

12-6-2024

Room sizes for the Dining Room, Living Room, Library, Foyer, and Bedrooms at the front of the house may increase per Elevation. Alternate Elevations may include Bay or Box Bay Windows as well as building offsets.
See sales manager for floor plan and room size dimensions with Alternate Elevations.